



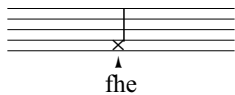
Sträggele

for Solo Flute

RSM 3013

Reto
Stadelmann

Explanations



With voice; the text should be "performed/sung" in a whispering and humming manner, so that the pitch is still audible. The \blacktriangle / ∇ indicate staccatissimo.



∇ ; short accent, without tonguing (adding a forceful breath to the sound)



Wind noise; generating an airy noise that contains much of the sound of an "f"-consonant



Whistle tone (W.T.)



Sprechrhythmus; notation for words to be spoken in the given rhythmic pattern. The vocalization should be performed in a sharp manner and in one breath, using lots of air (whispering quality).



„Vielen Dank, dass Sie meine Arbeit als Komponist unterstützen und die Musik offiziell kaufen.“



„Merci de respecter et de soutenir mon travail de compositeur en achetant officiellement ma musique.“



„Thank you for your purchase and supporting my work as a composer.“



Sträggele

for solo flute

RETO STADELMANN

$\text{♩} = c.60$

normale

(sim.)

f 3 fhe

6 fhe fhe fhe *p* sshe

10 *f* 3 fhe

13 grace note on the beat (slurred) *f* *p* sshe

17 *mf* *p* 3 *f* fhe fhe

22 **A** *p* 3 *ff* *ff* fhe

25 *f* *p* *sfz* *p* 3 *ff* molto vibrato, airy sound

B **rubato, narrative** **molto vibrato** **grace note on the beat**

normale **3**

29 *f* *p* *f*

Detailed description: Musical staff 29-32. Treble clef, key signature of one sharp (F#). Measure 29 starts with a fermata over a whole note G4. The staff contains a melodic line with triplets and slurs. Dynamics include forte (f), piano (p), and forte (f). Performance markings include 'rubato, narrative', 'molto vibrato', and 'grace note on the beat'.

grace note before the beat

33 *mf* *sfz* **3** *f*

Detailed description: Musical staff 33-36. Treble clef, key signature of one sharp. Measure 33 starts with a fermata over a whole note G4. The staff contains a melodic line with triplets and slurs. Dynamics include mezzo-forte (mf), sforzando (sfz), and forte (f). Performance marking includes 'grace note before the beat'.

37 *f* *p* *f* *p*

fhe fhe fhe

Detailed description: Musical staff 37-41. Treble clef, key signature of one sharp. Measure 37 starts with a fermata over a whole note G4. The staff contains a melodic line with slurs and accents. Dynamics include forte (f) and piano (p). The lyrics 'fhe fhe fhe' are written below the notes.

C

42 *f* **3** *sfz* *sfz*

Detailed description: Musical staff 42-44. Treble clef, key signature of one sharp. Measure 42 starts with a fermata over a whole note G4. The staff contains a melodic line with triplets and slurs. Dynamics include forte (f) and sforzando (sfz). Section marker 'C' is present.

grace note on the beat (slurred)

grace note on the beat (slurred)

45 *p* *ff* *f*

Detailed description: Musical staff 45-47. Treble clef, key signature of one sharp. Measure 45 starts with a fermata over a whole note G4. The staff contains a melodic line with triplets and slurs. Dynamics include piano (p), fortissimo (ff), and forte (f). Performance marking includes 'grace note on the beat (slurred)'.

48 *p* **3** *f*

little vibrato

Detailed description: Musical staff 48-51. Treble clef, key signature of one sharp. Measure 48 starts with a fermata over a whole note G4. The staff contains a melodic line with triplets and slurs. Dynamics include piano (p) and forte (f). Performance marking includes 'little vibrato'.

52 *f*

fhe fhe fhe

Detailed description: Musical staff 52-55. Treble clef, key signature of one sharp. Measure 52 starts with a fermata over a whole note G4. The staff contains a melodic line with slurs and accents. Dynamics include forte (f). The lyrics 'fhe fhe fhe' are written below the notes.